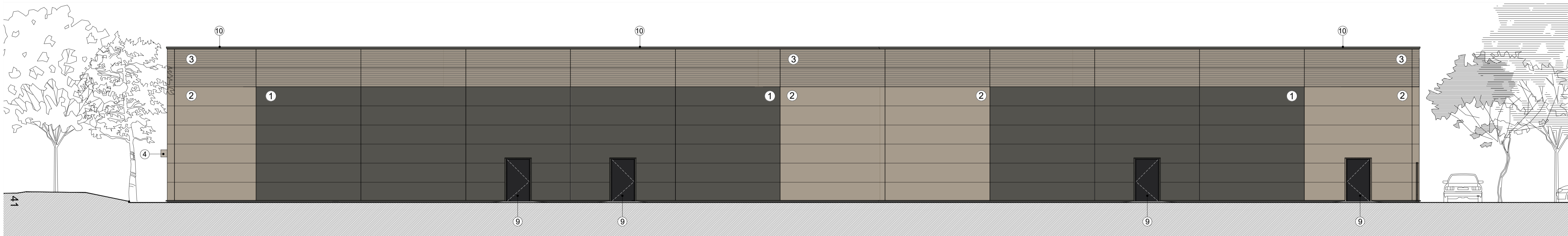
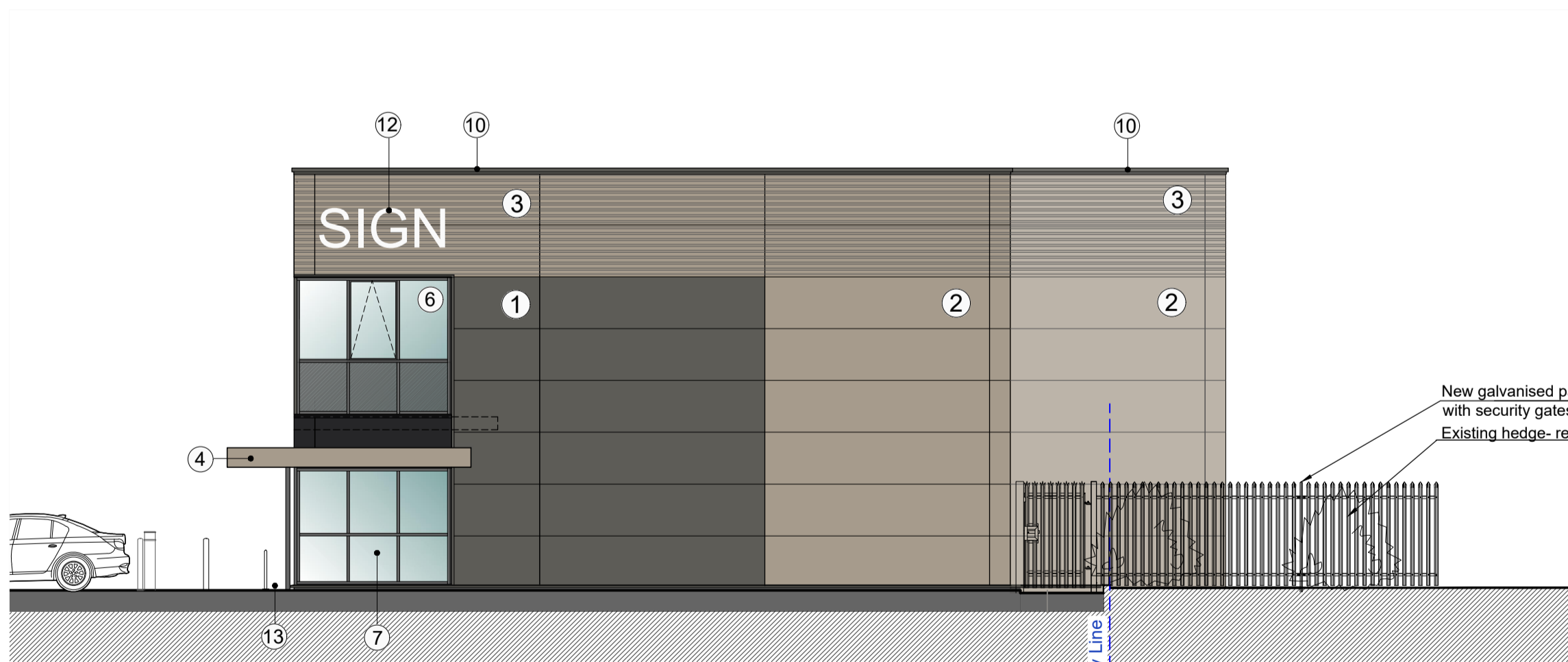


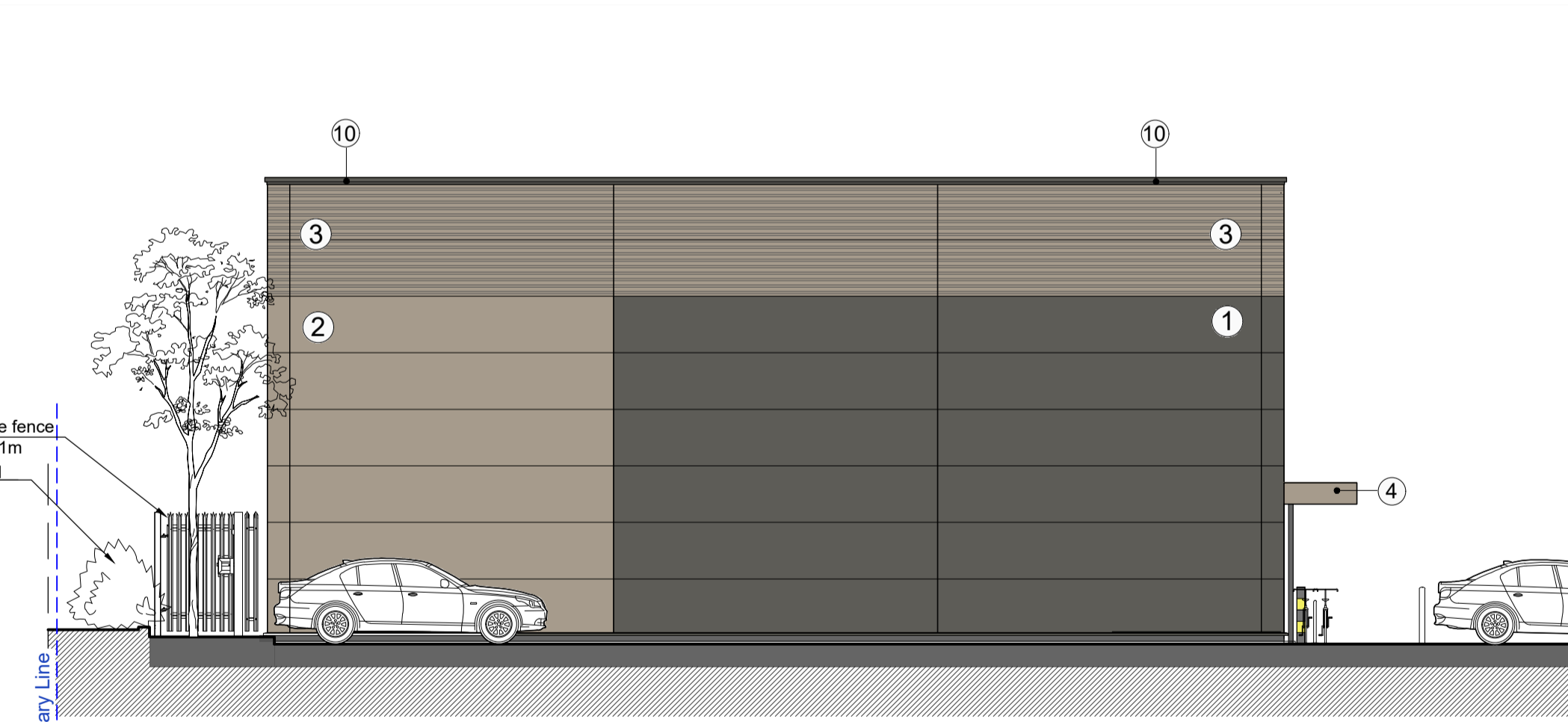
GA Elevation - Front (North-East)
Scale 1:100



GA Elevation - Rear (South-West)
Scale 1:100

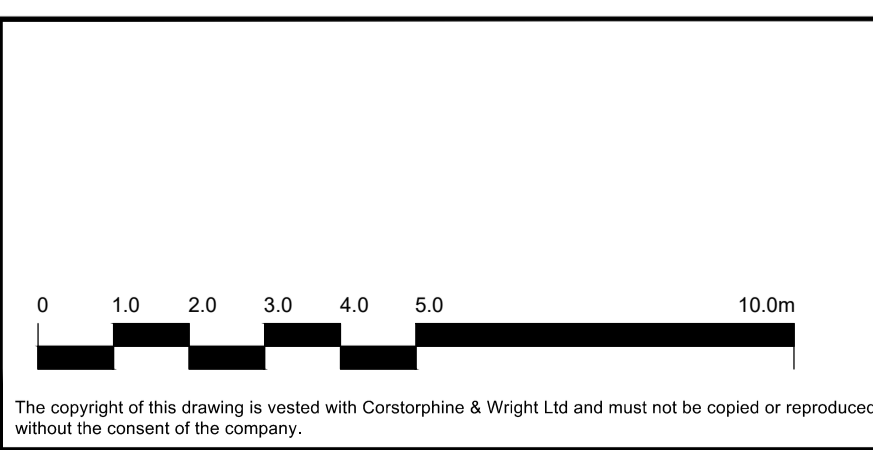


GA Elevation - Side (North-West)
Scale 1:100



GA Elevation - Side (South-East)
Scale 1:100

- ① Horizontally laid KINGSPAN KS1000MM (Mini-Micro) panels (or similar approved) Colour: Spectrum - Umber Grey RAL7022
- ② Horizontally laid KINGSPAN KS1000MM (Mini-Micro) panels (or similar approved) Colour: Kingspan Spectrum Metallic- Beigestone RAL1035
- ③ Trapezoidal composite wall panel KINGSPAN QuadCore™ KS1000RW (or similar approved) Colour: Kingspan Spectrum Metallic- Beigestone RAL1035
- ④ Pressed metal feature canopy Powder coated- RAL 1035
- ⑤ Insulated sectional loading door colour RAL 9005
- ⑥ Double glazed aluminum window system with openable windows where indicated (PPC frames- RAL 9005)
- ⑦ Double glazed aluminum window system with entrance door and side screen (PPC frames- RAL 9005)
- ⑧ High level double glazed windows (PPC frames- RAL 9005)
- ⑨ External steel doorset, factory finished colour RAL 9005.
- ⑩ Parapet wall flashing- PPC aluminium - RAL 7022
- ⑪ Individual non-illuminated white acrylic numerals
- ⑫ Signage indicative. Signage details- subject to separate application.
- ⑬ Bicycle single floor rack.
- ⑭ Service Yard hazard band bollards



P-01	Updated to car park layout changes, loading door position revised, entrance in unit b-4 relocated	19.08.2022	ASG	PH
Rev	Description	Date	Drw	Chk

Client Nigra Centre Ltd		Corstorphine & Wright	
Project Nigra House Mulberry Business Park, Wokingham			
Drawing Title GA Elevations- Block B		Warwick Studio Brook Hall, Brook Street, Warwick, CV34 4BL 01926 658 444 corstorphine-wright.com	
Drawing No. 21821-0323		Revision P-01	
Drawing Status PLANNING		Date 29.04.2022	
Drawn ASG	Checked PT	Paper Size A1	Scale 1:100

This page is intentionally left blank